

Shelves:

- Drop-in Style Bracket
- Upturn lip, all sides, for repositioning Shelves with merchandise
- Install in two positions: Flat & 17° downslant
- Notched to fit around Uprite to maximize space
- **For pricing see section 1000, pg 3**

EXAMPLE PART NO.

FRXS 16 07

STANDARD FINISH:

WHT

FRXS = Flex Rx® Shelf
 16 = Width: 16", 32", 36", 48"
 07 = Depth: 7 1/4"



Shelves

Base Shelf:

- Integrated Base Shelf & Kickplate
- Base Shelf can span multiple sections to reduce cost:
 Example: (1) 48" Base Shelf can be used with (3) 16" Sections
- Base height: 3 1/4"
- **For pricing see section 1000, pg 3**

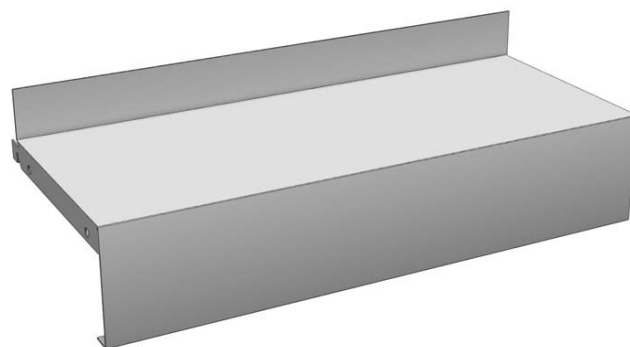
EXAMPLE PART NO.

FRXBS 16 07

STANDARD FINISH:

WHT

FRXBS = Flex Rx® Base Shelf
 16 = Width: 16", 32", 36", 48"
 07 = Depth: 7 1/4"



Base Shelf

Acrylic Retainers:

- 1 3/4"H
- Used with Shelf in downslant to retain taller product
- **For pricing see section 1000, pg 3**

EXAMPLE PART NO.

FRXPR 16

STANDARD FINISH:

XA5

FRXPR = Flex Rx® Product Retainer
 16 = Width: 16", 32", 36", 48"

- Clear Acrylic



Acrylic Retainers

Wire Divider:

- Clips to Acrylic Front
- 3/16" Wire, 8 1/4"D
- **For pricing see section 1000, pg 3**

PART NO.

FRXWD07

STANDARD FINISH:

WHT



Wire Divider