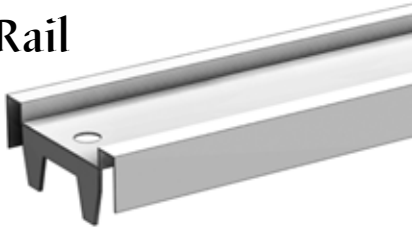


Back Rails - Slotwall w/Hardboard Backs

Top Rail

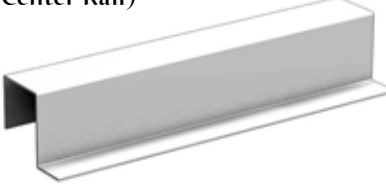
T



Hardboard Back Support Clip

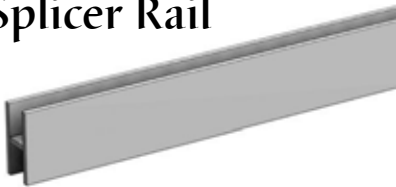
(hooks over Slotwall Center Rail)

HBSC



Half Splicer Rail

HS



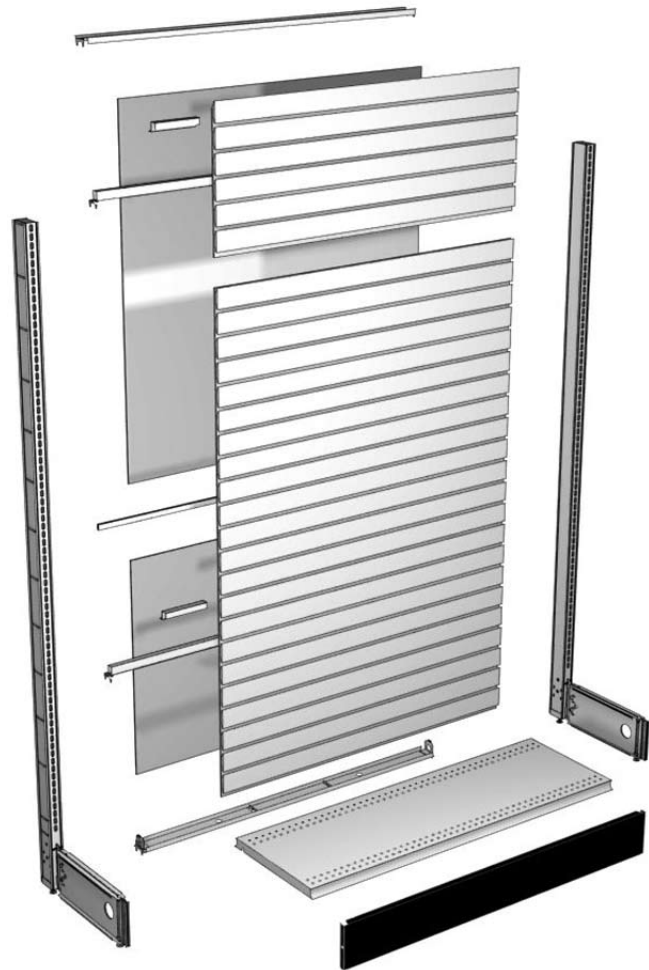
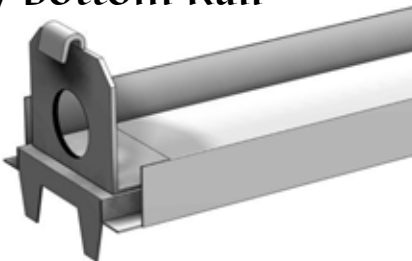
Slotwall Center Rail

SC



Heavy Duty Bottom Rail

HDB



RAIL	WIDTH		
	2'	3'	4'
Top			
Half Splicer			
Center			
Heavy Duty Bottom	N/A		

EXAMPLE PART NO.

STANDARD FINISH:

R 4 T

PLT

R = Rail

PLT

4 = Width: 2', 3', 4'

T = Rail Style:

(T, HS, SC, HDB)

• Top, Half Splicer, & Bottom Rails

• Optional Tier I & II colors

• R_SC PLT only

EXAMPLE PART NO.

STANDARD FINISH:

HBSC

GLV

HBSC = Hardboard Back Support Clip

• Galvanized

Rails:

- Slotwall w/Hardboard Island & Wall Sections require at least one Top, Slotwall Center, Hardboard Back Support Clip, and Heavy Duty Bottom Rail
- 36" - 66"H Uprite requires:
1 center rail & 1 support clip
- 72" - 120"H Uprite requires:
2 center rail & 2 support clip, & 1 half splicer
- On Extension Uprites, use one Slotwall Center Rail on 12" - 60"H & two on 66" - 72"H
- Electrical knockouts included on Top Rails
- For 2' section use regular duty Bottom Rail
- **For pricing see section 100, pg 77**