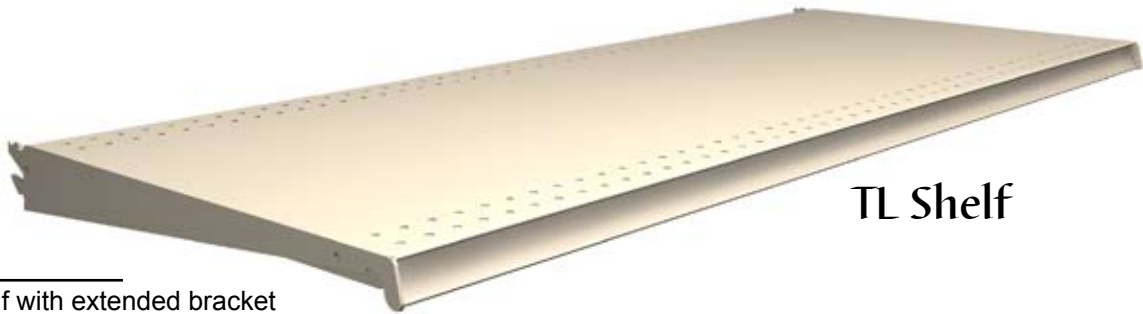


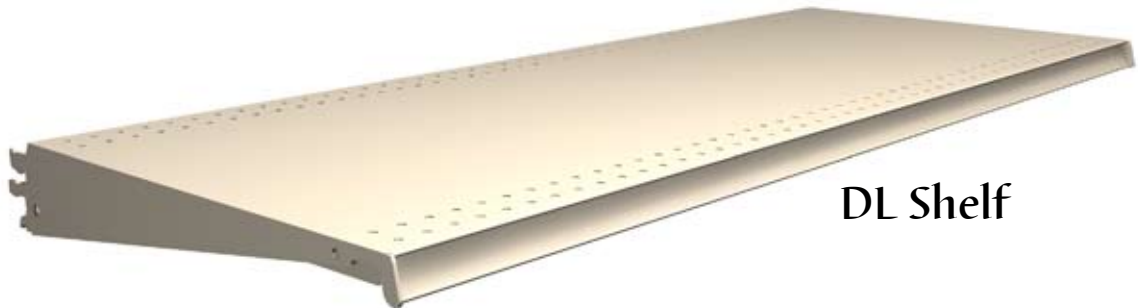
Standard Shelves



TL Shelf

TL-Style Shelf Includes:

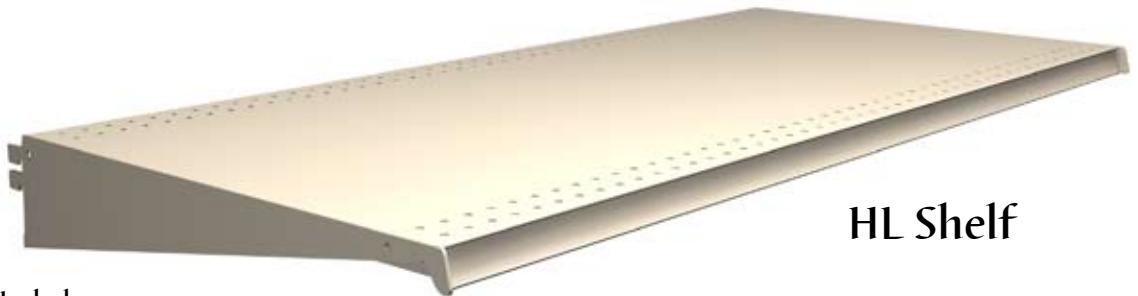
- 2-position tilt-in shelf with extended bracket
- Molding accommodates a 1.235" tag
- 1/4" perforations for clip on accessories
- Aluminum tag moldings can be ordered installed
- **For pricing see section 200, pg 1-2**



DL Shelf

DL-Style Shelf Includes:

- Multi-position drop-in shelf with extended bracket
- Tag molding & perforations similar to TL Style
- Aluminum tag moldings can be ordered installed
- **For pricing see section 200, pg 3-4**



HL Shelf

Heavy Duty HL-Style Shelf Includes:

- Tag moldings and perforations similar to TL Style
- Taller bracket profile allows 40% higher load capacity
- Aluminum tag moldings can be ordered installed
- **For pricing see section 200, pg 5**

Shelf Sizes

		DEPTH													
		7"	10"	13"	15"	16"	17"	19"	20"	22"	25"	28"	31"		
WIDTH	TL & DL	2'													
		30"													
		3'													
		4'													
HL	3'	N/A	N/A	N/A	N/A		N/A		N/A						
	4'	N/A	N/A	N/A	N/A		N/A		N/A						

EXAMPLE CATALOG NO.

TL 4 22 N

STANDARD FINISH:

PLT

- TL = Shelf Style (TL, DL, or HL)
- 4 = Width: (see Shelf size chart)
- 22 = Depth: (see Shelf size chart)
- N = No Aluminum Molding
- Molding M13 or M35
- Specify: "S" Satin or "G" Gold

- Optional Tier I & II colors