

Aluminum Tag Molding - Shelves & Decks

Ordering Information

EXAMPLE PART NO.

M13	S	4	L
-----	---	---	---

M13 = Molding Type:
M13, M55, M35, MR1
S = Finish: S (Satin) or G (Gold)
4 = Shelf Width: 3' or 4'
L = Shelf or Deck Molding length:
L = TL, DL, &HL Style Shelves
S = S Style Decks

STANDARD FINISH:

SAT

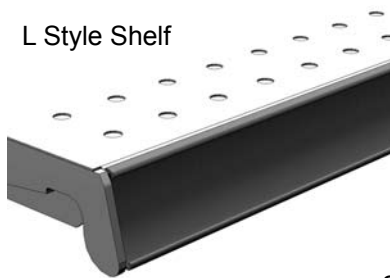
SAT • Satin
• Molding finish
• Optional G (Gold) except M55L

Ordering Tag Moldings:

- Order Shelves/Decks (pg 207-208) with moldings attached: Replace "N" at the end of the shelf or deck number with desired Molding part number, omitting last two characters (i.e. 4L)
- To order Molding for field installation, use part number examples on this page
- **For pricing see section 200, pg 23**

M13

L Style Shelf



S Style Deck



M55



M55:

- Holds both 1.235" & 1.250" price tags up at 55° angle
- Requires extended Base End Trims to cover the ends of the molding (pg 121)

M13:

- Holds both 1.235" & 1.250" price tags

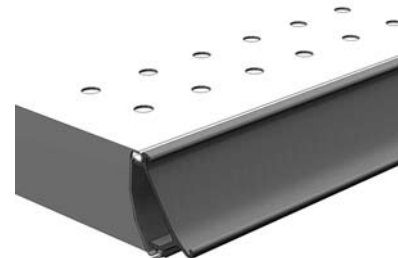
MR1



MR1:

- Holds both 1.235" & 1.250" price tags
- Extended upper edge to retain shelf top coverings

M35



M35:

- Holds both 1.235" & 1.250" price tags up at 35° angle