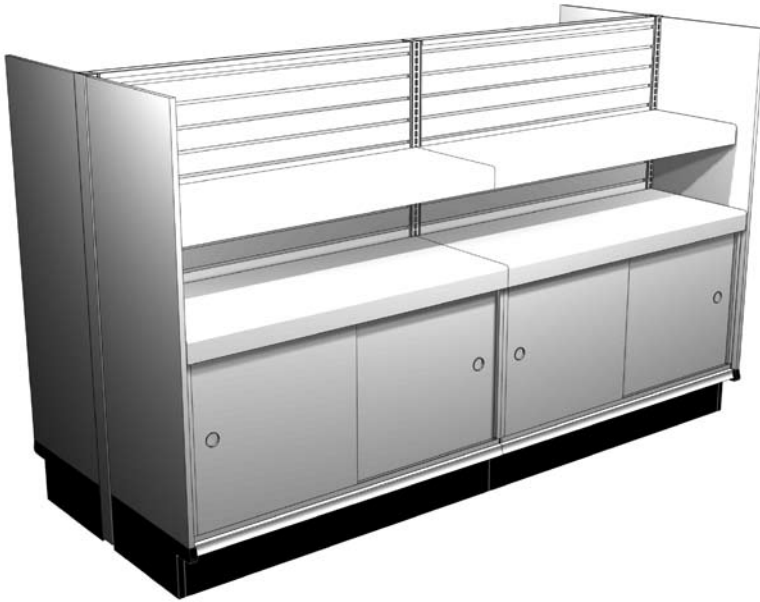


Laminated Shelves & Multi-Purpose Brackets

Laminated Wood Shelves



Laminated Wood Shelves:

- Order one pair of brackets (MPB or MPBF below) for each section
- Style A: Front drop lip with square edge
- Style P: Front drop lip with rounded edge
- Drop Lips: 3 5/16"H
- **For pricing see section 200, pg 32-33**

EXAMPLE PART NO.

LWS	A	8	16
-----	---	---	----

STANDARD FINISH:

LAX

LWS = Laminated Wood Shelf

A = Style:

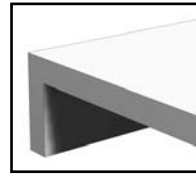
"A" Square Edge

"P" Rounded Edge

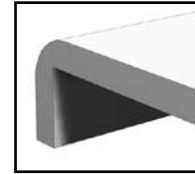
8 = Length: Even foot increments: 3' - 24'

16 = Depth: 13", 16", 19", 22", 25"

• Optional Tier I & II Laminates

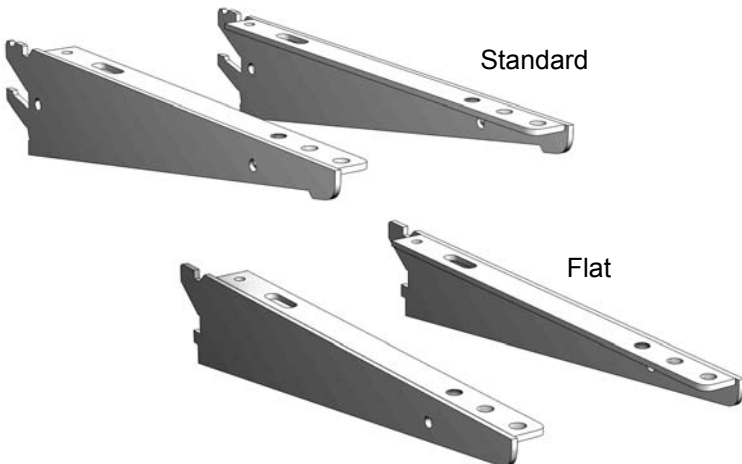


A Style



P Style

Multi-Purpose Brackets



Multi-Purpose Brackets:

- Support Laminated Shelves & Counters
- Install at 1.5° up, 17° & 30° down
- "Flat" version install at 0° only
- Actual length: face of Uprite to end of bracket
- **For pricing see section 200, pg 34**

ACTUAL LENGTH	STANDARD	FLAT
6 1/8"	MPB7	--
9 1/8"	MPB10	MPBF10
11 1/8"	MPB13	MPBF13
14 1/8"	MPB16	MPBF16
17 1/8"	MPB19	MPBF19
20 1/8"	MPB22	--
23 1/8"	MPB25	--

STANDARD FINISH:

PLT

• Optional Tier I & II colors