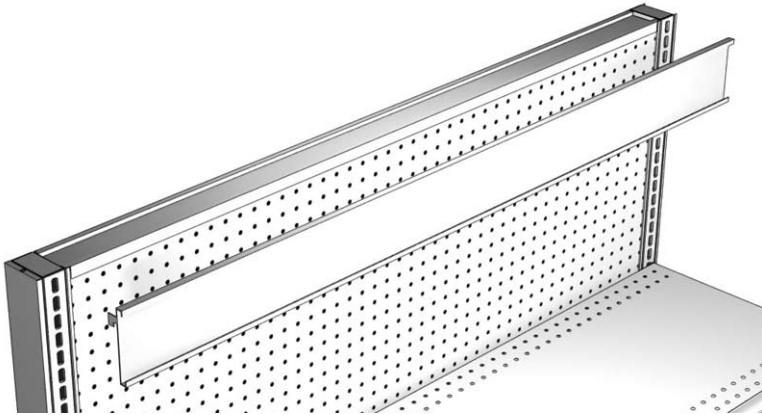


Upright Mount & Sign Holder Components

Upright Mount Sign Holder



Upright Mount Sign Holder:

- Sign Channel hooks into Uprights
- Sign insert (not included) slides into channel
- **For pricing see section 400, pg 17**

EXAMPLE PART NO.

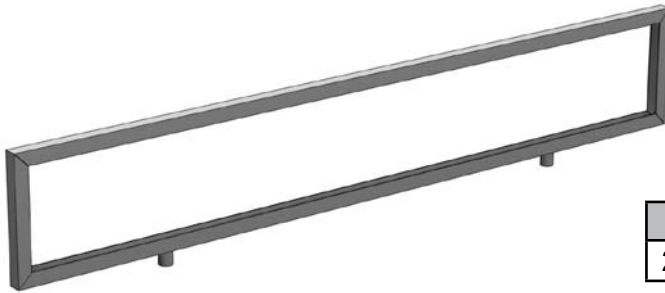
UMSH	4	04
------	---	----

STANDARD FINISH:

PLT

UMSH = Upright Mount Sign Holder • Optional Tier I & II colors
 4 = Width: 3' or 4'
 04 = Height: 4"

Double Stem Mount Sign Holder Frame



Double Stem Mount:

- Square corner frame
- Fits 36" & 48" EMP (pg 306)
- Stem fittings 16 5/8" on center
- Accepts two 3/8" - 24 threaded stems
- **For pricing see section 400, pg 17**

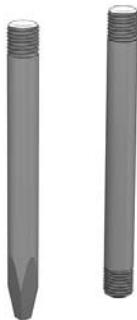
CARD SIZE	PART NO.
28"W x 4 1-2"H	HM2371

STANDARD FINISH:

PLT

• Optional Tier I & II colors

Fixed Length Stems



Fixed Length Stems:

- Two styles:
 Threaded: 3/8" - 24 threads both ends
 Tapered: 3/8" - 24 threaded one end & square taper on opposite end
- **For pricing see section 400, pg 17**

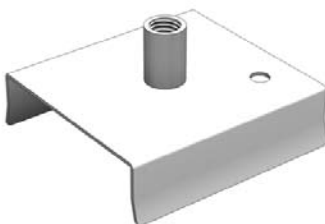
STYLE	LENGTH	PART NO.
Tapered	3"	HM2211
Threaded	3"	HM2191

STANDARD FINISH:

PLT

• Optional Tier I & II colors

Top Rail Sign Holder Clamp



Top Rail Clamp:

- Fits over Lozier Top Rails
- Accepts 3/8" - 24 threaded stems
- **For pricing see section 400, pg 17**

PART NO.

HM2221

STANDARD FINISH:

PLT

• Optional Tier I & II colors