

# S Series Shelves

## EXAMPLE PART NO.

SS	4	12	R
----	---	----	---

SS = S Series Storage Shelf  
4 = Section Width: 3' or 4'  
12 = Shelf Depth: 12", 18", 24", 30"  
R = "R" Regular Duty  
"H" Heavy Duty  
"WG" Wiregrid

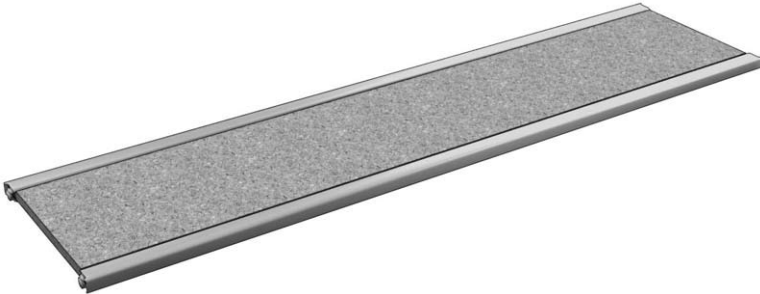
## STANDARD FINISH:

GLV
-----

## S Series Storage Shelf:

- Pre-assembled, no loose hardware needed
- Particleboard or wiregrid
- Steel reinforced front & rear edges
- Easily installed & repositioned

## Regular Duty Storage Shelf



## Regular Duty Storage Shelf:

- 5/8" industrial grade particleboard
- Seal coated particleboard for durability & stain resistance
- Reinforced with 3/4"D x 3/4"H galvanized steel channels
- Adjusts in 2" vertical increments
- Uniformly distributed load of 500 lb. per shelf
- **For pricing see section 800, pg 17**

## Heavy Duty Storage Shelf



## Heavy Duty Storage Shelf:

- 5/8" industrial grade particleboard
- Seal coated particleboard for durability & stain resistance
- Reinforced with 1 1/4"D x 3/4"H Galvanized steel channels
- Adjusts in 2" vertical increments
- Uniformly distributed load of 600 lb. per shelf
- **For pricing see section 800, pg 17**

## Wiregrid Storage Shelf For Fire Proof Application



## Wiregrid Storage Shelf:

- Used in lieu of particleboard shelf
- 1" x 6" Wiregrid
- Provides for:
  - Light penetration
  - Water flow through for sprinklers
  - Cleanliness
- Reinforced 1 1/4"D x 3/4"H galvanized steel channel
- Adjusts in 2" vertical increments
- Uniformly distributed load of 500 lb. per Shelf
- **For pricing see section 800, pg 17**