

## Back Panels:

- 40"H
- 1" rigid PVC Cartguard located 23" above floor
- Steel Support Post included
- **For pricing see section 900, pg 3**

### EXAMPLE PART NO.

|      |    |   |
|------|----|---|
| WCBP | 60 | U |
|------|----|---|

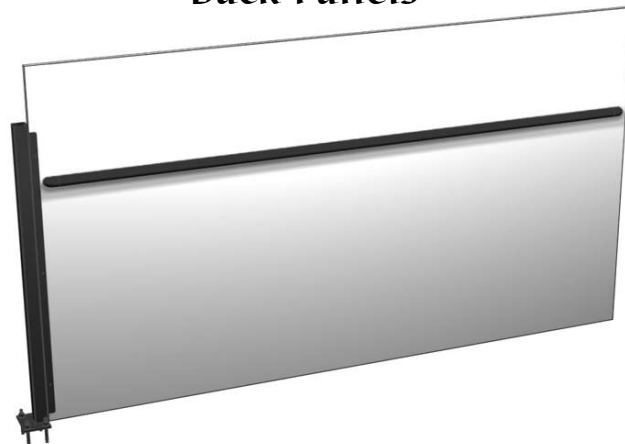
WCBP = Wood Counter Back Panel  
 60 = L-Shaped Counter Length: 60", 72", 96"  
 U = Unit

### STANDARD FINISH:

|     |     |     |
|-----|-----|-----|
| LAX | XG4 | CHR |
|-----|-----|-----|

LAX • Panel  
 • Optional Tier I & II laminates  
 XG4 • Cartguard  
 • Optional XG8 (Red) Cartguard  
 CHR • Support post

## Back Panels



## Swinging Gate:

- Single action spring hinge, adaptable to right or left hand swing
- Includes laminated gate & two steel posts
- Necessary assembly hardware included
- Order Gate Latch (below) separately
- **For pricing see section 900, pg 3**

### EXAMPLE PART NO.

|    |    |    |   |
|----|----|----|---|
| SG | 24 | 36 | U |
|----|----|----|---|

SG = Swinging Gate  
 24 = Width: 24" or 32"  
 36 = Height  
 U = Unit

### STANDARD FINISH:

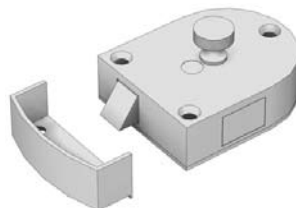
|     |     |
|-----|-----|
| LAX | CHR |
|-----|-----|

LAX • Panel  
 • Optional Tier I & II laminates  
 CHR • Posts

## Swinging Gate



## Gate Latch



### STANDARD FINISH:

|          |
|----------|
| Part No. |
| HM1941   |

|     |
|-----|
| ALU |
|-----|

- Aluminum

## PVC Cartguard:

- 1" x 1" rigid PVC Cartguard
- Available in XG4 (Black) & XG8 (Red)
- **For pricing see section 900, pg 3**

| STYLE             | PART NO. |
|-------------------|----------|
| 144"L Top End Cap | WCCG144T |
| 90° Corner        | WCCGC    |

### STANDARD FINISH:

|     |
|-----|
| XG4 |
|-----|

- XG4 • Top, End, 90° Corner  
 • Optional XG8 (Red) Cartguard

| STYLE      | PART NO. |
|------------|----------|
| 144"L Base | WCCG144B |

### STANDARD FINISH:

|     |
|-----|
| N/A |
|-----|

## Cartguard Detail

